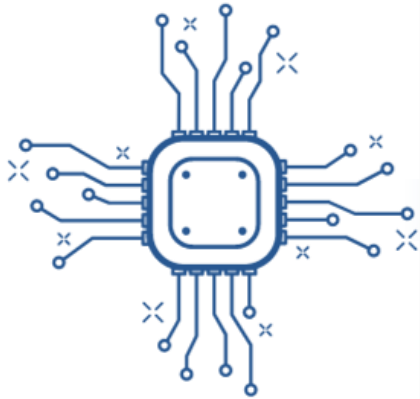


CoAsia.
ITSWELL Div.

Table Of Contents






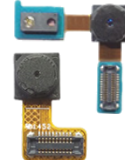
CONTENT

1. CoAsia Group
2. Automotive biz.
3. CoSAL Introduction
4. Roadmap

1. CoAsia Group



Revenue : 2 Billion USD
[2021]

CoAsia Elec.		CoAsia SEMI		CoAsia NEXELL		CoAsia Optics		ITSWELL		CoAsia CM VN	
Main Biz.	System Solution IT Cpt. Dist.	Main Biz.	System Semicon. DSP	Main Biz.	SOC Design Solution	Main Biz.	Optical Lens	Main Biz.	LED PKG Automotive	Main Biz.	Camera Module
Sales	890 mil. USD	Sales	5.5 mil. USD	Sales	8.9 mil. USD	Sales	58 mil. USD	Sales	43 mil. USD	Sales	225 mil. USD
Main Product		Main Service		Main Service	SoC Design	Main Product		Main Product		Main Product	
*Samsung Semicon. System Distribution		*Semiconductor Foundry		*Semiconductor Development		*Optical Lens		*Automotive & Home Appliance LED LAMP ASSY		*Camera Module	

2. Automotive Biz.

Low Power LED [Pd 0.05W ~ 0.2W]



V3816



1608



L2012



L3022



L3512



L3514



L5056



Lamp 3Φ



Lamp 5Φ



Main Application:

- Interior lighting
- Dashboard backlight & switches
- Shifter indicator
- Wheel remote controller
- AVN buttons

Models:

L3512 & L3514 & L3516 series
L3022 Series
L2012 Series
1608 Series

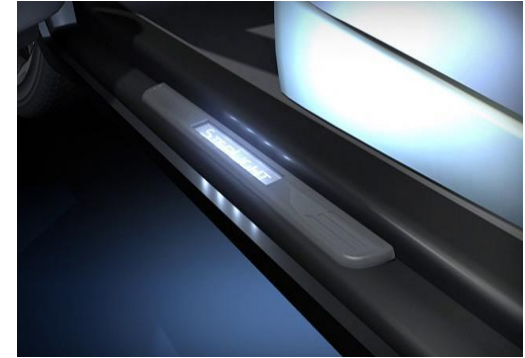


Main Application:

- Interior Lighting
- Ambient lamp
 - console
 - sunroof
 - door trim

Models:

L3512 & L3514 & L3516 series
L5056 RGB Series
L2012 Series



Main Application:

- Interior Lighting
- Dashboard backlight & switches
- Shifter indicator
- Door scuff

Models:

V3816 Series

High Power LED [Pd : 0.5W ~ 1W]



E3230



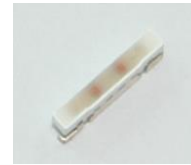
S5A56



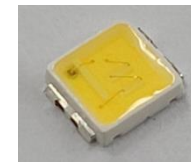
S5630



S5450



V8014



S3030



S3528



Main Application:

- Interior lighting
- Dashboard backlight & switches
- Shifter indicator
- Wheel remote controller
- AVN buttons

Models:

E3230 series
S5A56 series
S5630 series



Main Application:

- Interior Lighting
- OHCL
- Ambient lamp
- console
- sunroof
- door trim

Models:

S3030 series
S5630 series
S5450 series



Main Application:

- Exterior & Interior Lighting
- CHMSL
- OHCL
- Rear combination lamp
- Side turn indicator

Models:

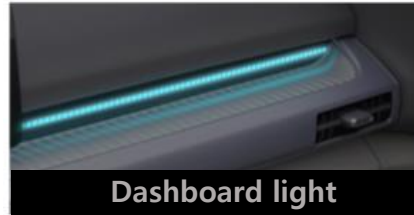
V8014 Series

RGB Ambient Lighting (Mood Lamp) Product Line up

- Providing LED for HKMC Interior Ambient Lighting since 2016
- Supplying LED for 60% of HKMC Interior Ambient Lighting



E-Shifter



Dashboard light



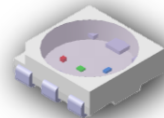
Battery charging indicator



Lighting Grille



L3516 Series
3.5 x 2.8 x 1.4
Pd : 0.2W



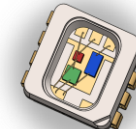
L5056 Series
5.4 x 5.0 x 1.6
Pd : 0.2W



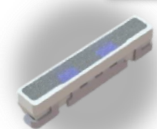
S5A56 Series
5.4 x 5.0 x 1.2
Pd : 0.5~1W



E3536 Series
3.2 x 3.0 x 0.7
Pd : 0.5~1W



IC Built-in Series
3.3 x 3.0 x 1.4
Pd : 0.2W

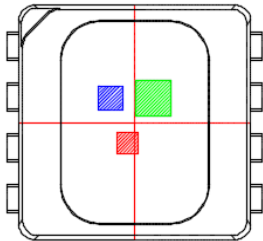


V8014 RGB Series
8.14 x 1.65 x 1.4
Pd : 0.2~0.5W

T.B.D

CoSAL IWS-L3138-WRGB-IC

CoSAL : Coasia Smart Advanced LED



Features

- Dimension : 3.3 x 3.0 x1.4 mm
- IC Built in RGB PKG (ISELED protocol)
- Pre-calibrated to D65 (3 Step)
- Temperature compensation (Red Chip)
- Diagnostic function
- AEC-Q102
- MSL 2

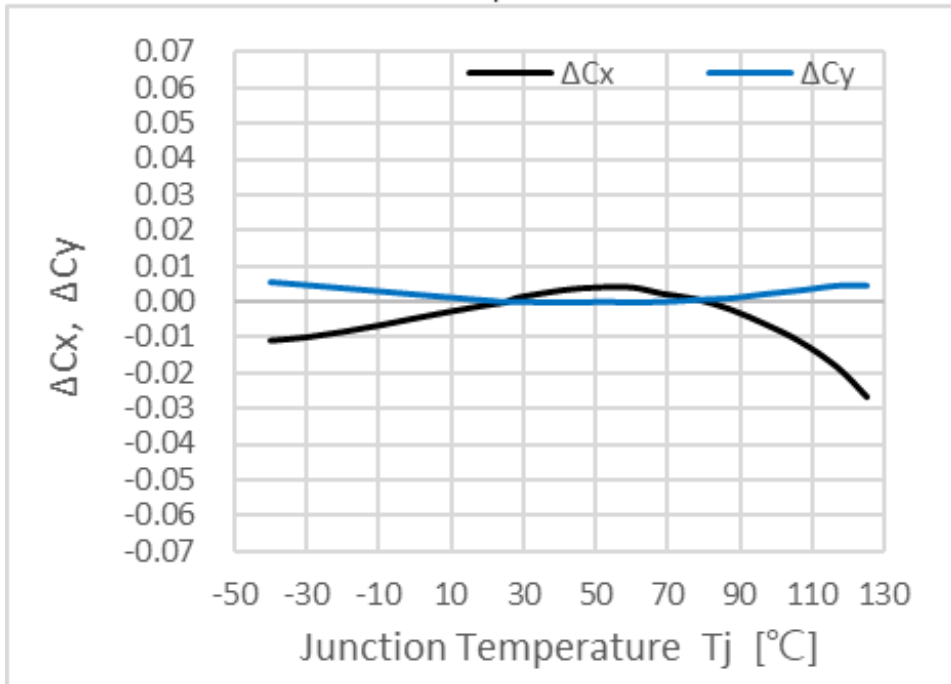
Part No.	Luminous Intensity [mcd]				Vcc	Typ. If	Max. Tj
	White @ D65	Red	Green	Blue			
IWS-L3138-WRGB-IC	1400	340	970	80	5 V	0.03 A	125 °C

3. CoSAL Introduction

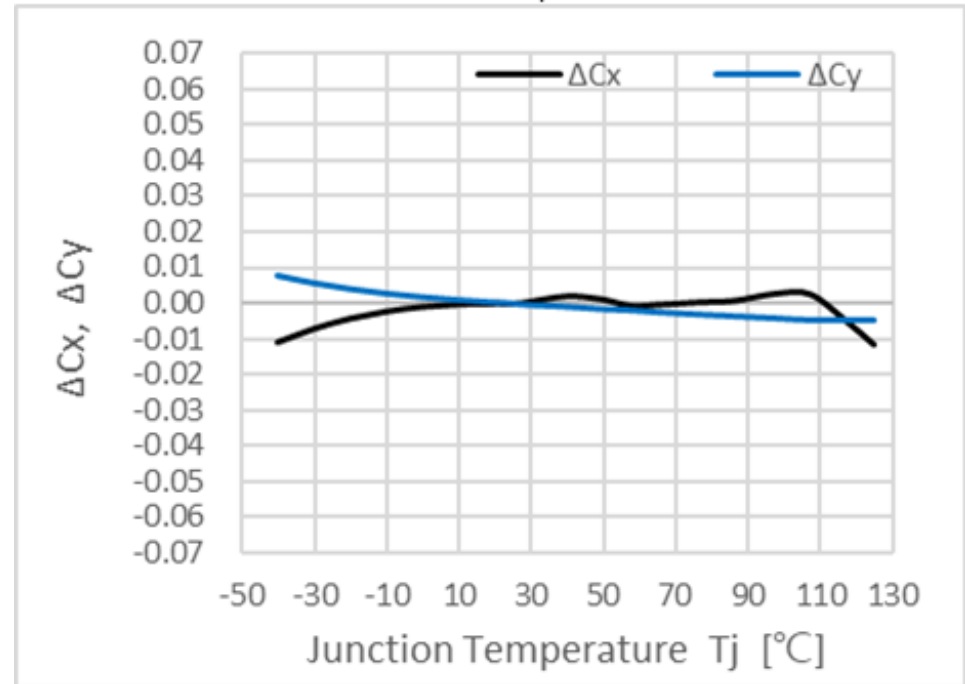
CoSAL IWS-L3138-WRGB-IC

- Minimize ΔCx and ΔCy under high temperature conditions

White
RGB Set = (255, 255, 255)
Linear Compensation

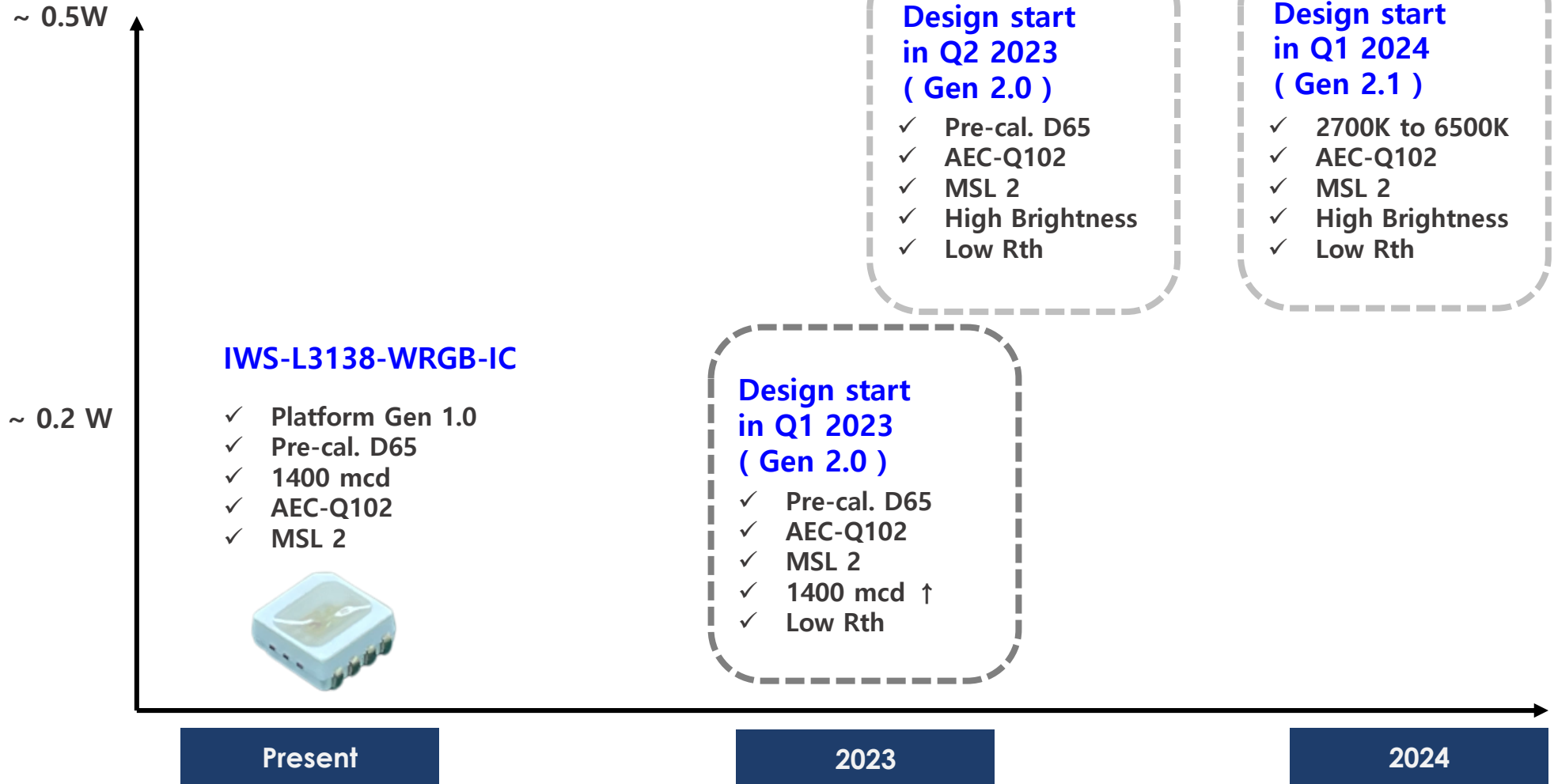


White
RGB Set = (255, 255, 255)
Non-Linear Compensation



4. Roadmap

CoSAL IWS-L3138-WRGB-IC



For more information

Bryan Park

Email bryan@coasia.com

Wechat Bryanpark37

Tel: +82-10-2625-0552

Thank you!